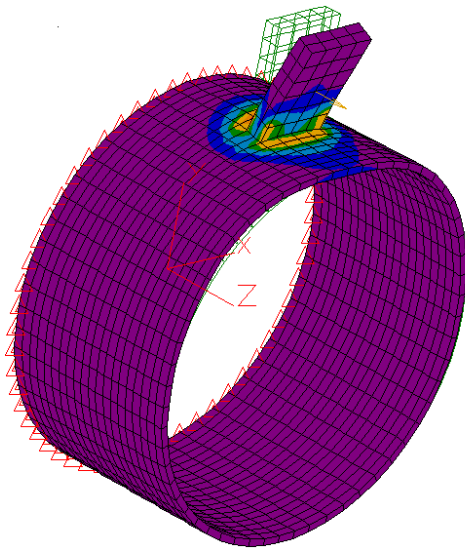


LOPRO Boatlifts – New Zealand Production Commences...

Marathon Products Ltd of Whangaparaoa has served boaters in New Zealand and Pacific Islands since 2003 – and now is manufacturing a new lift to efficiently store vessels dry. The new **LOPRO** is the only boatlift produced in New Zealand and designed for the rigours of our conditions. A complete range of models serves applications to 10,200 kg.



Finite Element Analysis (FEA) was applied to validate the design and to bring attention to stress concentrations that the lift and support of a hull will create. FEA consists of a computer model of a material or design that is stressed and analyzed for specific results. This process analyses loading by “coding” stress by colour. Low stress areas of a given model are shown in “cool” colours like purple, blue and green. As the stress concentration goes up, so goes the colour migrating to shades of yellow, orange and showing a high concentration in red. In applying this methodology, material thickness, gusset lengths and radii can be modified to eliminate any concerns – and confirm durability and perfection. Margin is built in to suit tougher applications, like those found in this part of the world.

The **LOPRO** has a range of models to suit both monohulls and catamarans determined by weight and length. Integrating the long proven **HydroHoist** walkway system provides the user with confident, comfortable access along the port and starboard sides to access a cover, raise an aerial or rinse off the day's spray. These medium-density polyethylene structures float in the tide when the lift is submerged acting like giant fenders so there is no chance of damaging your boat as you enter or depart. The walkways capture your boat once you come in-between to protect you from the dock and counter the effects of current or windage. The walkways are specially designed with a flat, non-slip top which means you are provided a stable walkway on each side of the boat. The **LOPRO** enables confident passage *above the water* - even with lift submerged.



The rear bunks of the **LOPRO** articulate to accommodate a range of deadrise angles; the front bunk pivots on a central pin to suit the rake of the hull as it steepens, moving toward the bow. The width of the lift is manufactured to suit the beam, provide suitable capture once between the walkways and close proximity for easy cockpit entry.

Ultimately, the Marathon **LOPRO** capitalizes on 40+ years of **HydroHoist** engineering to manufacture a product locally with NZ sizing, materials, labour and installation to make for the best possible New Zealand results.

So balance your recreational life and keep your vessel pristine by mooring above the water. A **LOPRO** puts days and dollars back in your account by eliminating maintenance inherent with wet-mooring. Keep your boat clean, dry and free from marine growth or corrosion at your dock with the Marathon **LOPRO**.